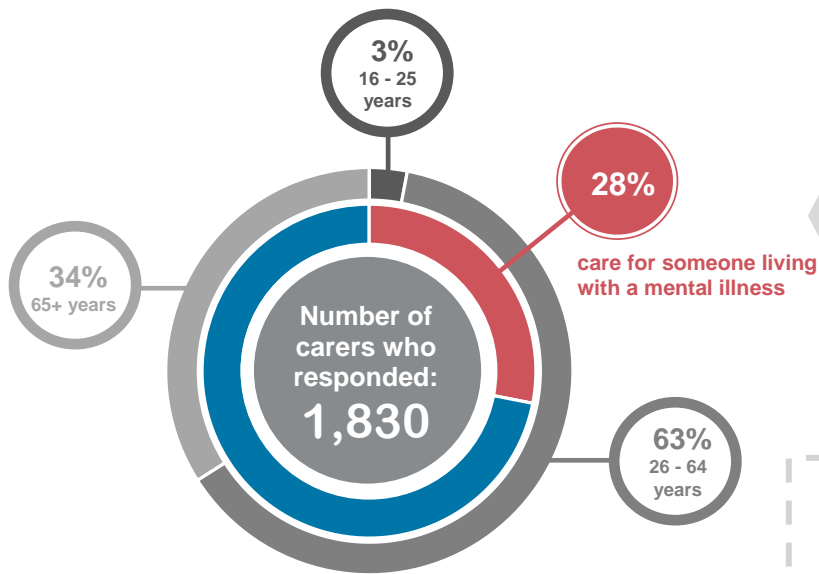


Mental Health Carers

Carers NSW 2018 Carer Survey



Who they care for

Gender

57.9% male
41.8% female
0.3% self-described

Age

14% under 17 years
18% 18 - 29 years
44% 30 - 64 years
23% 65+ years

Relationship to carer

51% son or daughter
21% partner
16% parent
4% sibling
7% other

84% are female

93% are the primary carer

67% live with the person they care for

43% have a disability or long-term illness



51% of carers of people living with a mental illness have difficulties meeting their everyday living expenses

-compared with-

35% of all carers.



19% higher levels of distress are reported by carers of people living with a mental illness, when compared with other carers



60% of carers of people living with a mental illness receive the government carer allowance or carer payment

-compared with-

66% of all carers.