

## Culturally and Linguistically Diverse Carers

7735 carers surveyed - 340 identified as culturally and linguistically diverse (CALD)<sup>1</sup>

### Carer Profile

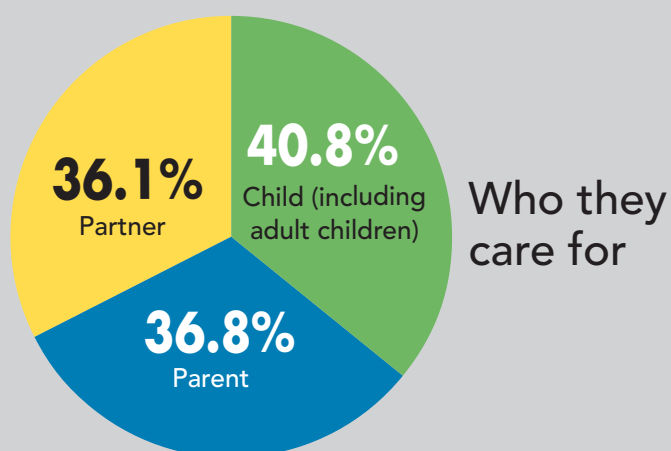


#### CALD carers

**79.6%** Female

**89.4%** Primary carers

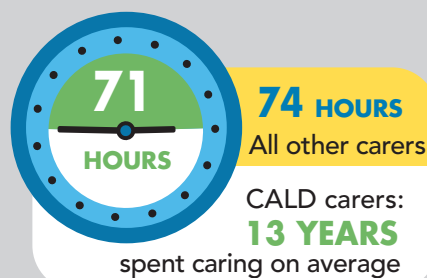
**74.4%** Care for one person only



#### Average age of carer



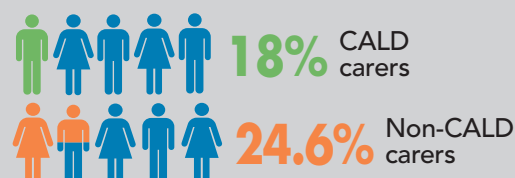
#### Average time caring per week



### Finances



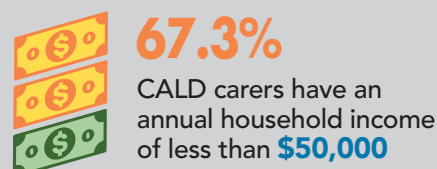
#### Receive Carer Payment



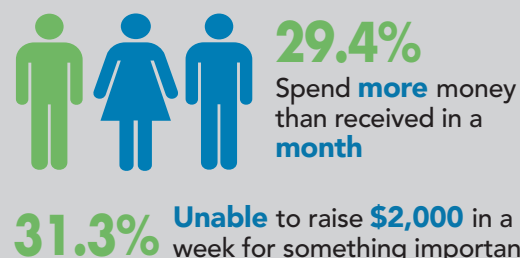
#### Receive Carer Allowance



#### Household income



#### Financial stress



<sup>1</sup> Defined as: identifying with cultural backgrounds not associated with main English-speaking countries (Australia, United Kingdom, Republic of Ireland, New Zealand, Canada, United States of America and South Africa) AND spoke a language other than English (including Auslan/sign languages).

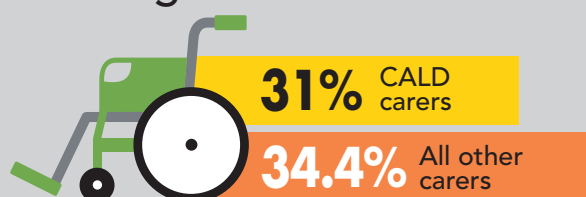
## Culturally and Linguistically Diverse Carers

7735 carers surveyed - 340 identified as culturally and linguistically diverse (CALD)

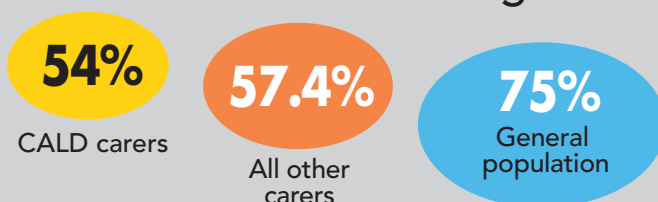
### Health and Wellbeing



#### Long-term illness/disability



#### Level of wellbeing



#### Level of social isolation



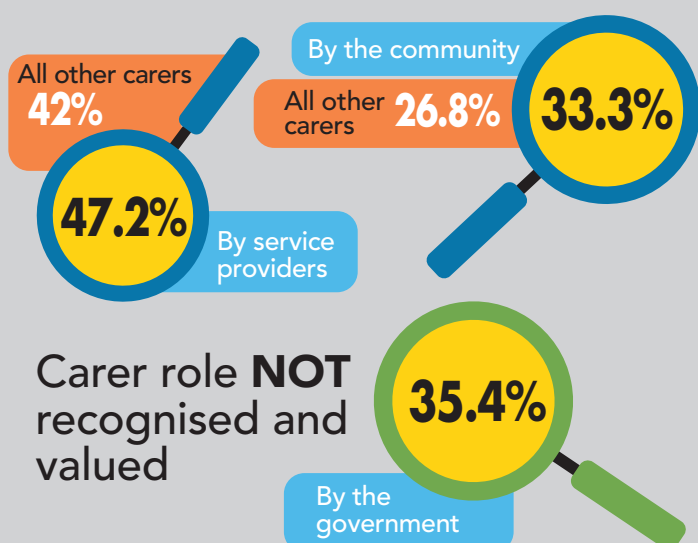
#### Psychological distress



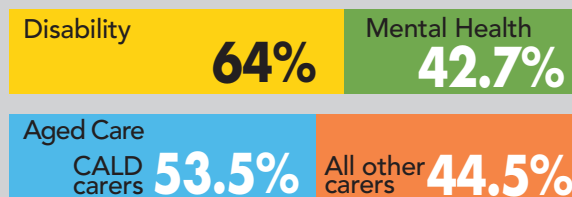
### Recognition and Support



#### Carer role recognised and valued



#### Support service type used



#### Carer support

