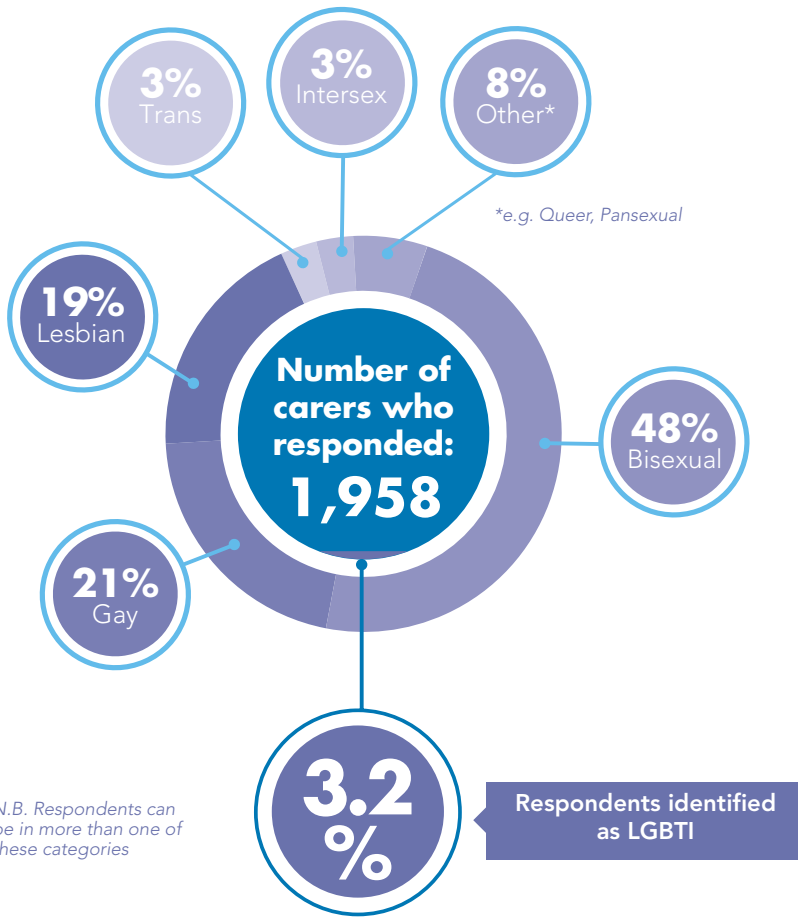
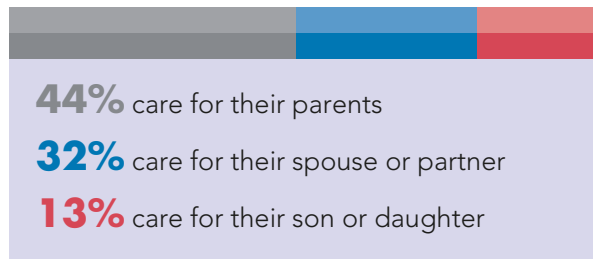
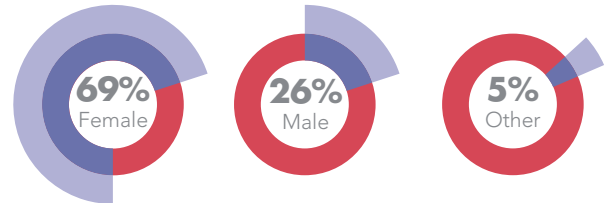


## 2016 Carer Survey LGBTI carers



*N.B. Respondents can be in more than one of these categories*

LGBTI carers identified as:



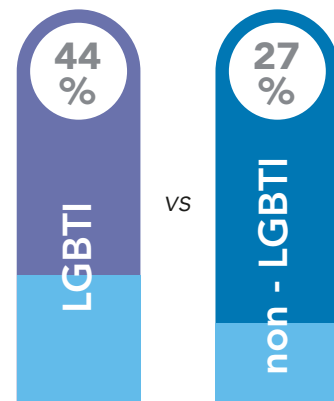
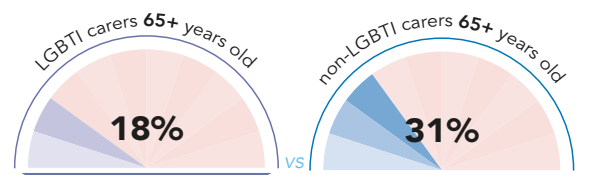
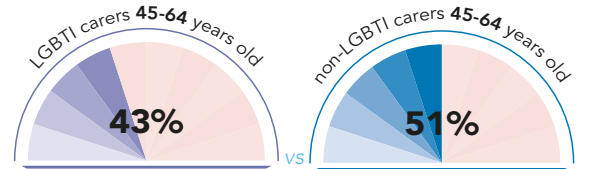
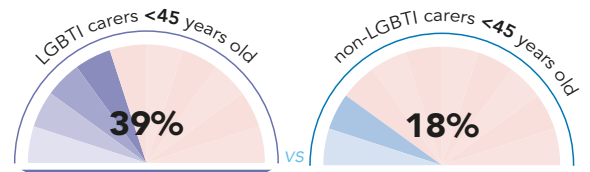
23% of LGBTI carers care for a person with a disability  
52% of non-LGBTI carers care for a person with a disability



44% of LGBTI carers care for a person with a mental illness  
31% of non-LGBTI carers care for a person with a mental illness



53% of LGBTI carers care for a person with a health or medical condition  
38% of non-LGBTI carers care for a person with a health or medical condition



Carers who have held previous caring roles that have ended

Compared to non-LGBTI carers, LGBTI carers:

