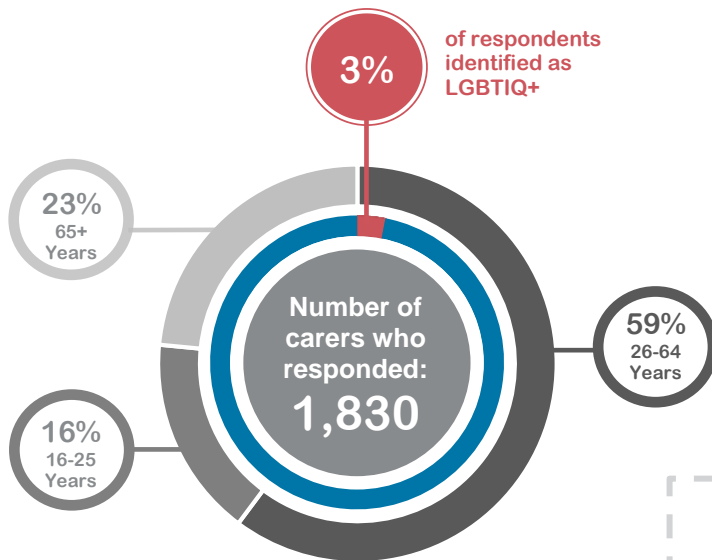


## LGBTIQ+\* carers

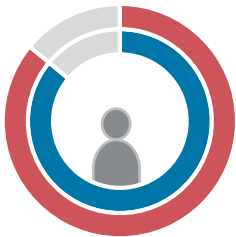
Carers NSW 2018 Carer Survey



### Relationship



- 21% care for someone else
- 21% care for their spouse or partner
- 27% care for their son or daughter
- 30% care for their parent



**86%** of LGBTIQ+ carers are the primary carer  
-- compared with --  
**86%** of all carers



**39%** of LGBTIQ+ carers are employed



**31%** of LGBTIQ+ carers care for multiple people  
-- compared with --  
**24%** of all carers

**46%** of LGBTIQ+ carers find it difficult to meet living expenses



**25%** of LGBTIQ+ carers provide 24/7 care  
-- compared with --  
**28%** of all carers



**22%** of LGBTIQ+ carers agree that their caring role is recognised and valued by their community

\* Lesbian, gay, bisexual, transgender, intersex and other sexuality, sex and gender diverse.