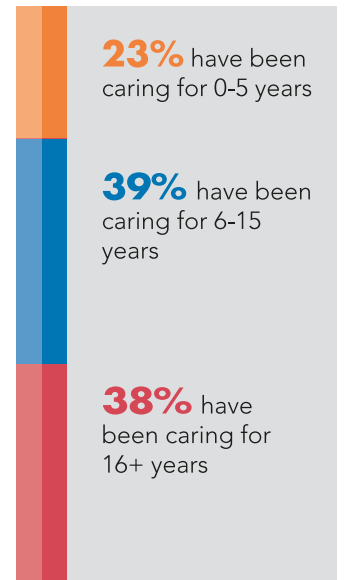
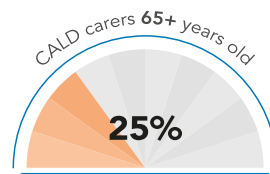
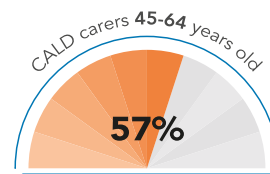
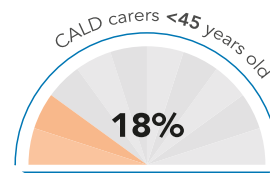
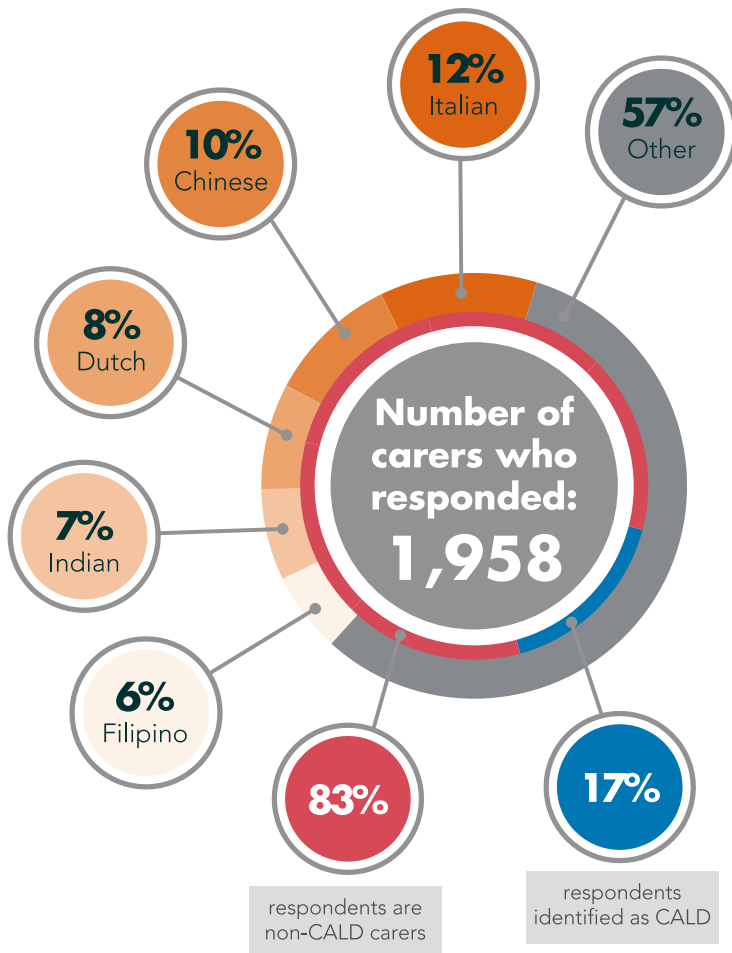


2016 Carer Survey
Culturally and Linguistically Diverse Carers

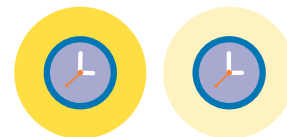


54% of CALD carers report high/very high levels of psychological distress



Nearly
4 in 5

CALD carers report below average wellbeing



1 in 2

provide more than 70 hours of care per week

43% of working age CALD carers are employed:

25% often consider quitting

57% feel supported by their workplace to combine work and care

36% have reduced working hours

32% have refused a new job

25% can't afford to work any less

68% of CALD carers are satisfied with services received by care recipients

52% of unemployed working age CALD carers would like to work